



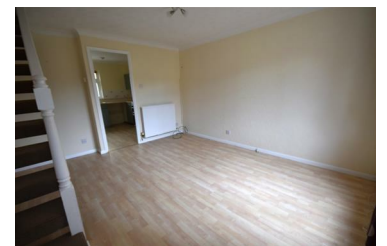
## 7 Nash Close, Manningtree, CO11 2LE

£895 PCM



Unfurnished two bedroom end of terrace house located on this popular residential development with easy access to Manningtree mainline train station. The property comprises in brief lounge with stairs to first floor, door to kitchen/breakfast room with base and eye level cupboard, further door into conservatory which leads out onto the rear garden. On the first floor there are two bedrooms both with wardrobes and a bathroom

- Easy access to Manningtree mainline train station
- Garage in block
- Conservatory



Consumer Protection Regulations 2008

Whilst every care is taken to ensure the accuracy of these particulars the Agent has not tested any apparatus, equipment, fixtures, fittings or services and so cannot verify that they are in working order or fit for the purpose. Prospective tenants must therefore satisfy themselves by inspection or otherwise. Photographs are not necessarily current and all descriptions, dimensions and details are given in good faith and believed to be correct but are a general outline for guidance only and should not be relied upon as statement or representation of fact.

MJM House 14 South Street, Manningtree, Essex, CO11 1BB Tel: 01206 394334 Email: info@mjmestates.co.uk <https://www.mjmestates.co.uk/>